



## CWICstats Dashboard Report 4th Quarter 2010

### Highlights in this issue

- Of the 205,424 Chicagoans ages 16-24 in the labor force, 27% were unemployed in 2009 Page 2
- Chicago educational attainment mapped by local area Page 5
- New Illinois Department of Employee Security (IDES) projections for 2008-2018 predict much slower job growth in Chicago Page 10

Local labor force measures	Current time period	How current compares to prior time period:	
		Immediately prior	One year prior
<b>Chicago (IDES)</b>	<b>November 2010</b>	<b>October 2010</b>	<b>November 2009</b>
Total in labor force	1,335,137	1,321,540	1,317,985
Total employment	1,200,200	1,187,257	1,167,498
Total unemployment	134,937	134,193	150,487
Unemployment rate	10.1%	10.2%	11.4%
<b>Cook County (IDES)</b>	<b>October 2010</b>	<b>September 2010</b>	<b>October 2009</b>
Initial unemployment claims	22,401	22,341	27,542
<b>Chicago (IDES)</b>	<b>Q1 2010</b>	<b>Q4 2009</b>	<b>Q1 2009</b>
New hires	120,986	167,423	106,580
<b>Chicago (IDES)</b>	<b>Q4 2009</b>	<b>Q3 2009</b>	<b>Q4 2008</b>
Job creation	48,510	41,854	45,400
Net job flow	-20,768	-8,933	-30,776

Illinois unemployment measures	Current time period	How current compares to prior time period:	
		Immediately prior	One year prior
<b>Illinois (BLS) Annual rates for the four-quarter periods indicated</b>	<b>Q4 2009-Q3 2010</b>	<b>Q3 2009-Q2 2010</b>	<b>Q4 2008-Q3 2009</b>
Unemployed 15 weeks or more (U1)	6.7	6.7	4.4
<b>Official unemployment rate (U3)</b>	<b>10.6</b>	<b>10.6</b>	<b>9.0</b>
Unemployed plus discouraged (U4)	11.2	11.1	9.5
Unemployed plus discouraged & other marginally attached (U5)	11.9	12.0	10.3
Unemployed plus all marginally attached & part time workers (for economic reasons) (U6)	18.0	18.0	15.7

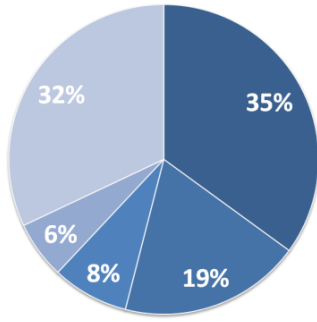
Green solid arrows represent an indicator that has improved compared to prior time period. For example, a *drop* in unemployment would be represented by (), while an *increase* in new hires would be represented by (). Red outlined arrows represent an indicator that has worsened compared to prior time period. For example, a drop in job creation would be represented by (), while an *increase* in unemployment would be represented by ().

## Youth stats

### Chicago Youth and Young Adult Employment by Industry

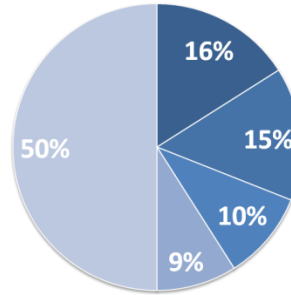
Source: American Community Survey (ACS) 2009

In Chicago in 2009, Accommodations and Food Service, and Retail Trade industries employed 54% of youth (ages 16-19), but only 31% of young adults (ages 20-24)



Youth ages 16-19

- Accommodation and Food Services
- Retail Trade
- Educational Services
- Health Care and Social Assistance
- Other



Young adults ages 20-24

- Accommodation and Food Services
- Retail Trade
- Educational Services
- Health Care and Social Assistance
- Other

## Youth and Young Adult Education and Employment Status for Chicago 2009

Source: Weighted frequencies from American Community Survey (ACS)\*

School Status	Ages 16-19		Ages 20-24		Ages 16-24	
	Number	% of total population	Number	% of total population	Number	% of total population
Total Youth/Young Adult Population	152,277	100%	217,760	100%	370,037	100%
By school status						
In school	127,335	84%	88,966	41%	216,301	59%
Not in school	24,942	16%	128,794	59%	153,736	42%
Employment Status	Ages 16-19		Ages 20-24		Ages 16-24	
	Number	% of total population	Number	% of total population	Number	% of total population
Total Youth/Young Adult Population	152,277	100%	217,760	100%	370,037	100%
By labor force & employment status						
In the labor force	49,571	33%	155,853	72%	205,424	56%
Employed	25,972	17%	122,984	56%	148,956	40%
Unemployed	23,599	16%	32,889	15%	56,468	15%
<i>Unemployment rate (Unemployed among those in labor force)</i>	48%		21%		27%	
Not in labor force	102,706	67%	61,907	28%	164,613	45%
Disconnected Youth/Young Adults	Ages 16-19		Ages 20-24		Ages 16-24	
	Number	% of total population	Number	% of total population	Number	% of total population
Total Youth/Young Adult Population	152,277	100%	217,760	100%	370,037	100%
Not in school, but in labor force & unemployed	5,294	3%	19,992	9%		
Not in school & not in labor force	13,941	9%	30,462	14%	44,403	12%

\*The figures are estimates for the Chicago population ages 16-24. They are weighted based on a smaller number of unweighted survey respondents. The unemployment rate calculated in ACS is different than the official Bureau of Labor Statistics rate and may not match. Percentages may not total 100% due to rounding.

## Youth and Young Adult Employment Status by Race/Ethnicity for Chicago 2009

Source: Weighted frequencies from American Community Survey (ACS)\*

Population	Ages 16-19		Ages 20-24		Ages 16-24	
	Number	% of total population	Number	% of total population	Number	% of total population
Total Youth/Young Adult Population	152,277	100%	217,760	100%	370,037	100%
By race/ethnicity						
Black non-Hispanic	63,737	42%	68,328	32%	132,065	36%
Hispanic	49,569	33%	63,919	29%	113,488	31%
White non-Hispanic	31,743	21%	73,485	34%	105,228	28%
Other	7,228	5%	12,028	6%	19,256	5%
Employment Status	Ages 16-19		Ages 20-24		Ages 16-24	
	Number	% of race/ethnicity category	Number	% of race/ethnicity category	Number	% of racial/ethnic category
Black non-Hispanic youth/young adult population	63,737	100%	68,328	100%	132,065	100%
In the labor force	20,287	32%	41,699	61%	61,986	47%
Employed	7,443	12%	26,229	38%	33,672	25%
Unemployed	12,844	20%	15,470	23%	28,314	21%
<i>Unemployment rate</i> <i>(Unemployed among those in labor force)</i>	63%		37%		46%	
Not in labor force	43,450	68%	26,629	39%	70,079	53%
Hispanic youth/young adult population	49,569	100%	63,919	100%	113,488	100%
In the labor force	15,064	30%	47,992	75%	63,056	56%
Employed	7,950	16%	39,299	61%	47,249	42%
Unemployed	7,114	14%	8,693	14%	15,807	14%
<i>Unemployment rate</i> <i>(Unemployed among those in labor force)</i>	47%		18%		25%	
Not in labor force	34,505	70%	15,927	25%	50,432	44%
White non-Hispanic youth/young adult population	31,743	100%	73,485	100%	105,228	100%
In the labor force	11,315	36%	59,035	80%	70,350	67%
Employed	8,907	28%	51,404	70%	60,311	57%
Unemployed	2,408	8%	7,631	10%	10,039	10%
<i>Unemployment rate</i> <i>(Unemployed among those in labor force)</i>	21%		13%		14%	
Not in labor force	20,428	64%	14,450	20%	34,878	33%
Other youth/young adult population	7,228	100%	12,028	100%	19,256	100%
In the labor force	2,905	40%	7,127	59%	10,032	52%
Employed	1,672	23%	6,052	50%	7,724	40%
Unemployed	1,233	17%	1,075	9%	2,308	12%
<i>Unemployment rate</i> <i>(Unemployed among those in labor force)</i>	42%		15%		23%	
Not in labor force	4,323	60%	4,901	41%	9,224	48%

\*The figures are estimates for the Chicago population ages 16-24. They are weighted based on a smaller number of unweighted survey respondents. The unemployment rate calculated in ACS is different than the official Bureau of Labor Statistics rate and may not match. Percentages may not total 100% due to rounding.

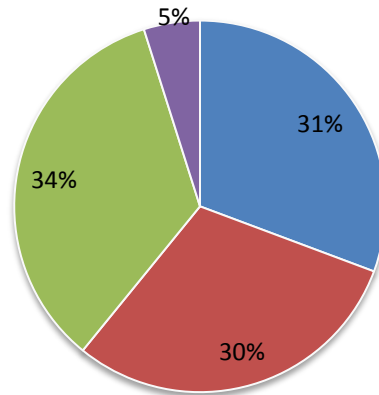
# Chicago Youth and Young Adults (ages 16-24) Labor Force & Unemployment by Race/Ethnicity for Chicago 2009

Source: Weighted frequencies from American Community Survey (ACS)\*

The composition of the youth and young adult (ages 16-24) labor force in Chicago in 2009 were approximately equally divided among Hispanic, Black non-Hispanic, and White non-Hispanic.

### Chicago Labor Force by Race/Ethnicity 16 to 24 Year Olds

■ Hispanic ■ Black, not Hispanic ■ White, not Hispanic ■ Other

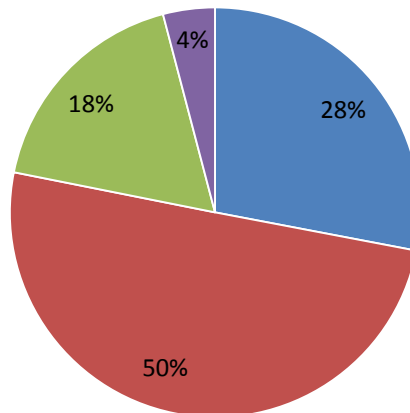


---

Black non-Hispanics were 50% of the unemployed youth and young adults (ages 16-24) in the labor force in Chicago in 2009.

### Chicago Unemployed Workers by Race/Ethnicity 16 to 24 Year Olds

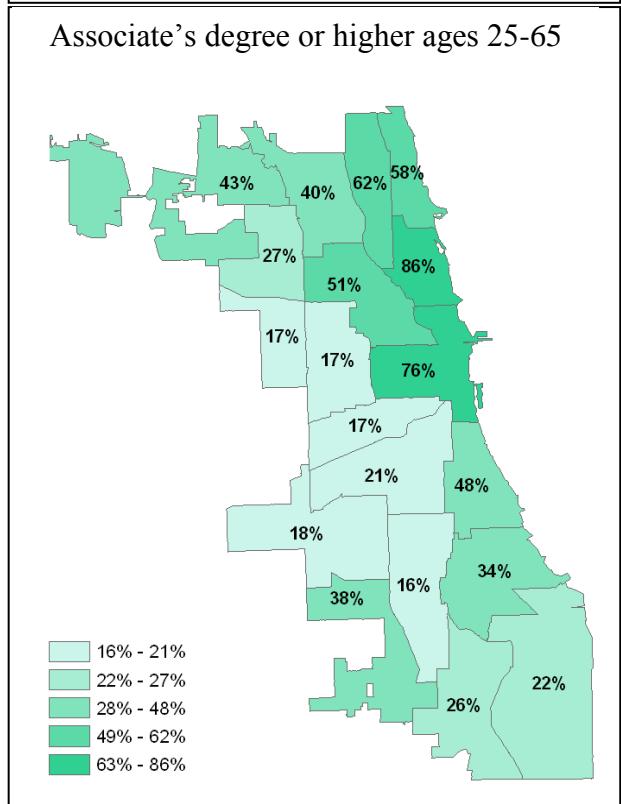
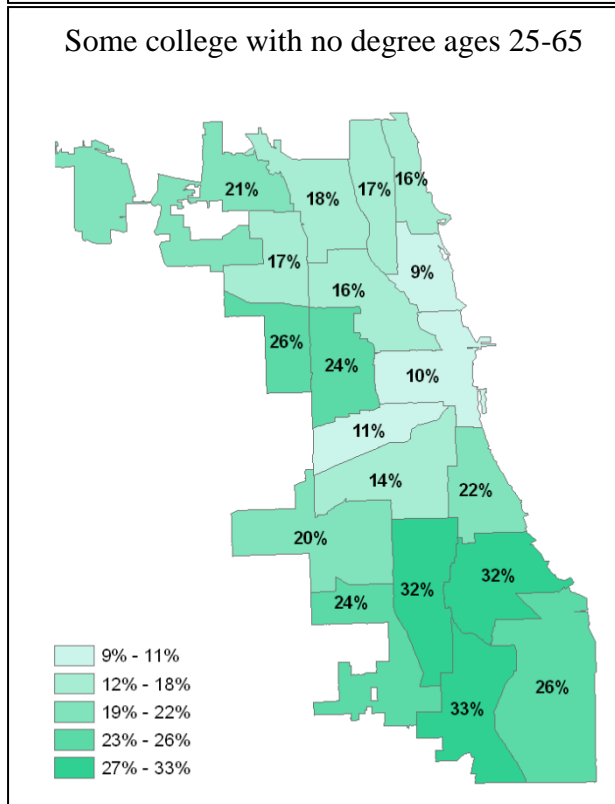
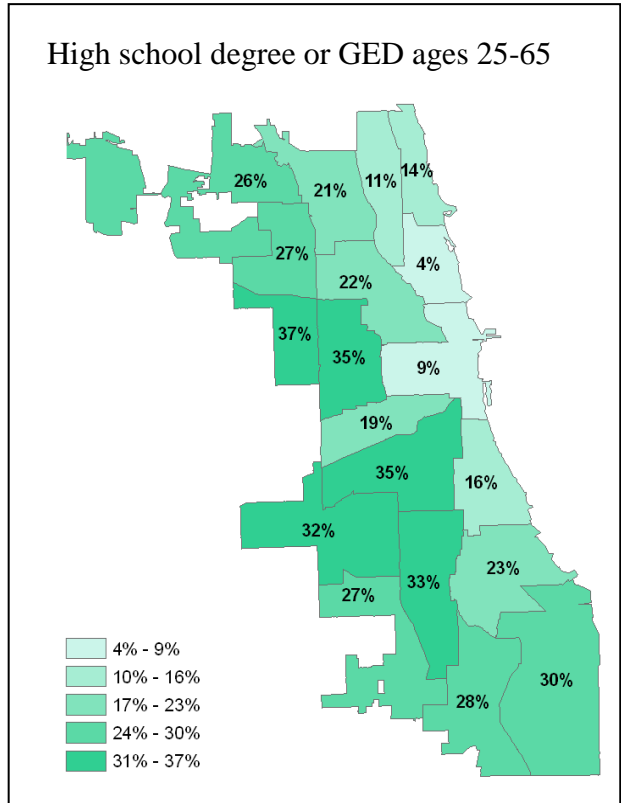
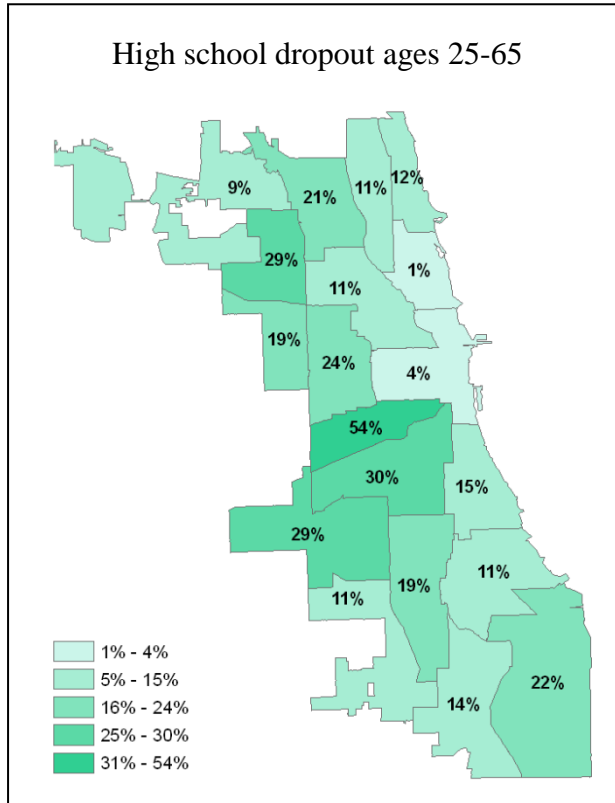
■ Hispanic ■ Black, not Hispanic ■ White, not Hispanic ■ Other



## Local stats

### Chicago Education Attainment by Local Area

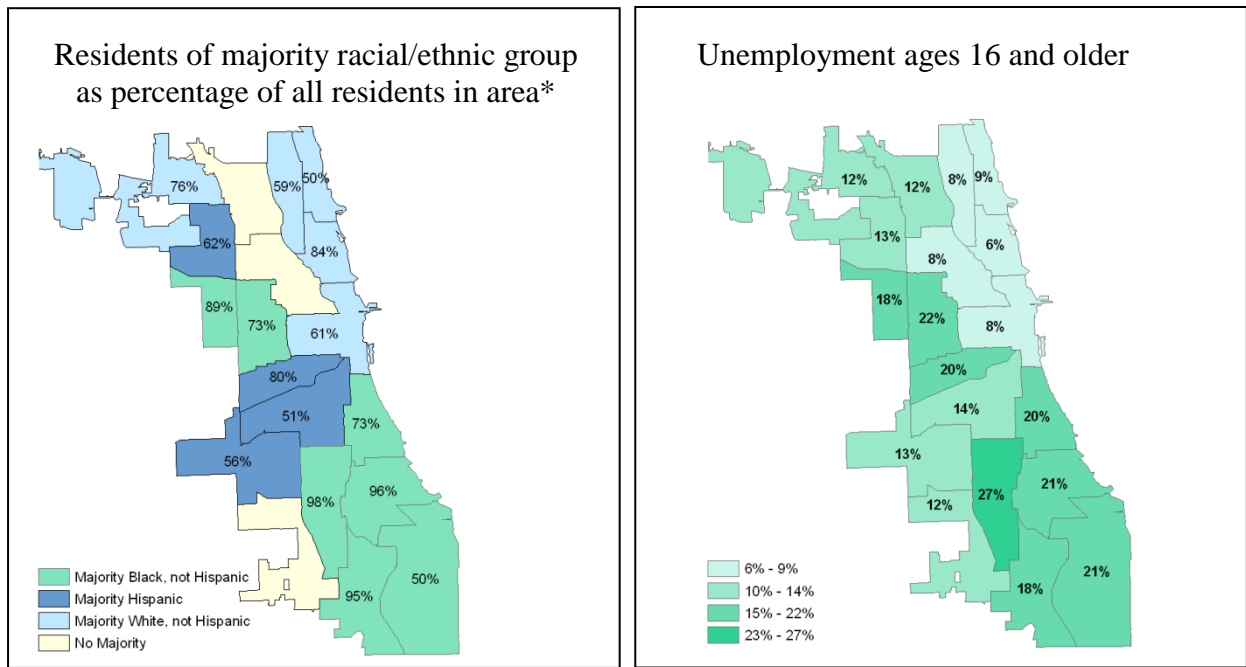
Source: ACS 2009 Public Use Microdata Area (PUMA)



## Local stats

### Chicago Race/Ethnicity, Unemployment and Education by Local Area

Source: ACS 2009 Public Use Microdata Area (PUMA)



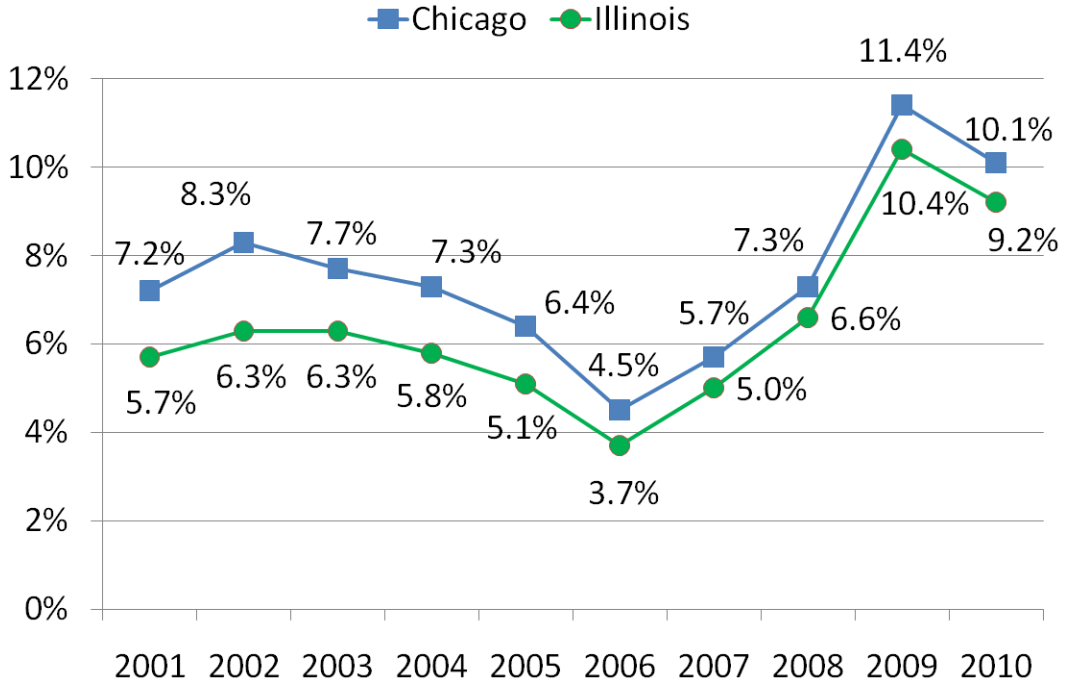
\*For example, 61% of residents in the area including the Loop are white, while 56% of the residents in area in the southeast corner of the city are Hispanic. Areas without labels do not have a racial/ethnic group that is at least 50% of the area's population.

PUMA	Chicago Community Areas included in PUMA	Highest level of Education Attained for the Population age 25 to 65					
		Unemployment rate for the population 16 and older	H.S. dropout	H.S. diploma or GED	Some college, no degree	Associate's degree	Bachelor's degree and higher
3501	Rogers Park, Uptown, Edgewater	9%	12%	14%	16%	7%	51%
3502	Lakeview, Lincoln Park	6%	1%	4%	9%	2%	84%
3503	West Ridge, Lincoln Square, North Center	8%	11%	11%	17%	3%	59%
3504	Forest Glen, North Park, Albany Park, Irving Park	12%	21%	21%	18%	5%	35%
3505	Edison Park, Norwood Park, Jefferson Park, Dunning, O'Hare	12%	9%	26%	21%	9%	34%
3506	Portage Park, Montclare, Belmont Cragin	13%	29%	27%	17%	9%	18%
3507	Austin	18%	19%	37%	26%	6%	11%
3508	Humboldt Park, West Garfield Park, East Garfield Park, North Lawndale	22%	24%	35%	24%	4%	13%
3509	Hermosa, Avondale Logon Square and West Town	8%	11%	22%	16%	5%	47%
3510	Near North Side, Near West Side, Loop, Near South Side	8%	4%	9%	11%	4%	73%
3511	South Lawndale, Lower West Side	20%	54%	19%	11%	3%	14%
3512	Armour Square, Archer Heights, Brighton Park, McKinley Park, Bridgeport, New City	14%	30%	35%	14%	5%	16%
3513	Garfield Ridge, West Elsdon, Gage Park, Clearing, West Lawn, Chicago Lawn	13%	29%	32%	20%	7%	12%
3514	Douglas, Oakland, Fuller Park, Grand Boulevard, Kenwood, Washington Park, Hyde Park	20%	15%	16%	22%	6%	42%
3515	Woodlawn, South Shore, Chatham, Avalon Park, Greater Grand Crossing	21%	11%	23%	32%	9%	25%
3516	West Englewood, Englewood, Auburn Gresham, Washington Heights	27%	19%	33%	32%	7%	10%
3517	Ashburn, Beverly, Mount Greenwood, Morgan Park	12%	11%	27%	24%	5%	32%
3518	Roseland, Pullman, West Pullman, Riverdale	18%	14%	28%	33%	8%	18%
3519	South Chicago, Burnside, Calumet Heights, South Deering, West Side, Hegewisch	21%	22%	30%	26%	6%	16%
	All Chicago	13%	17%	22%	19%	6%	36%

## Job stats

The unemployment rate dropped substantially in November 2010 vs. November 2009.

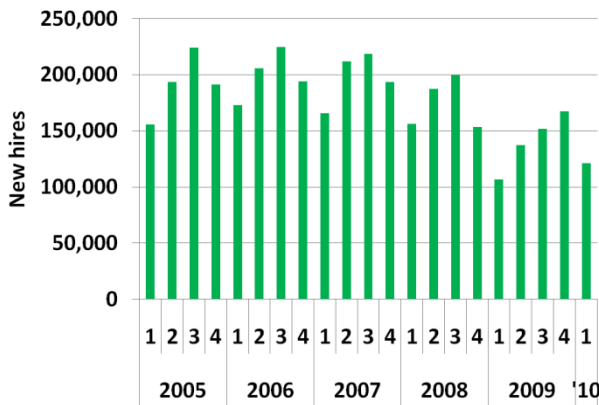
### Chicago and Illinois unemployment rate in the month of November 2001-2010



Source: IDES

Chicago new hires increased in the fourth quarter of 2009 for the third quarter in a row.

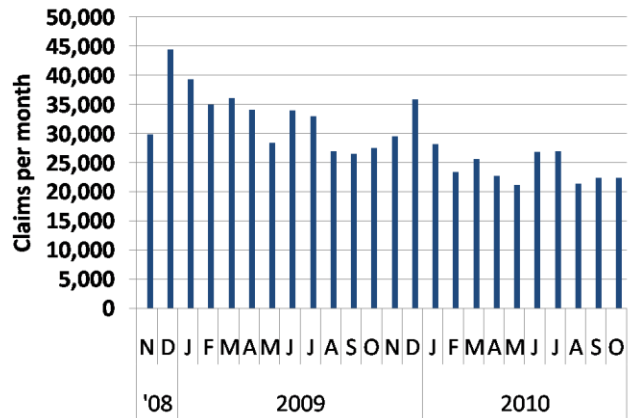
#### Chicago new hires by quarter



Source: IDES

Unemployment claims in 2010 have declined compared to the same month in 2009.

#### Cook County initial unemployment claims by month 2008-2010



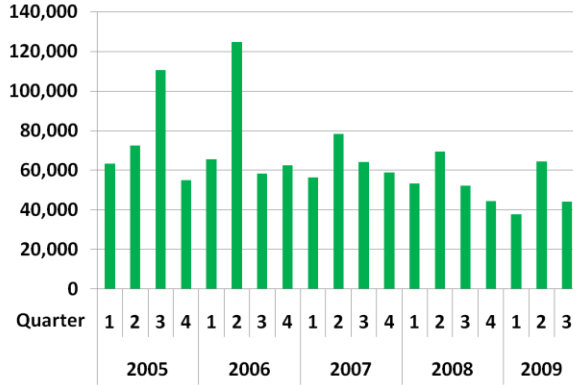
Source: IDES

## Job stats

Job creation in the first 3 quarters of 2009 was lower compared to those quarters in 2008.

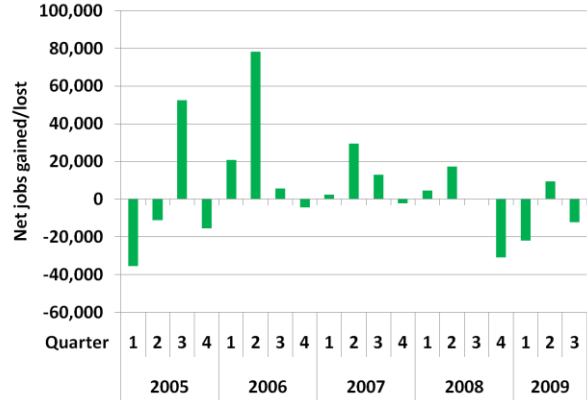
Chicago had a net loss of jobs in 3 of the last 4 quarters ending in the third quarter of 2009.

**Jobs created in Chicago by quarter 2005-2009**



Source: IDES

**Net job flow in Chicago 2005-2009**



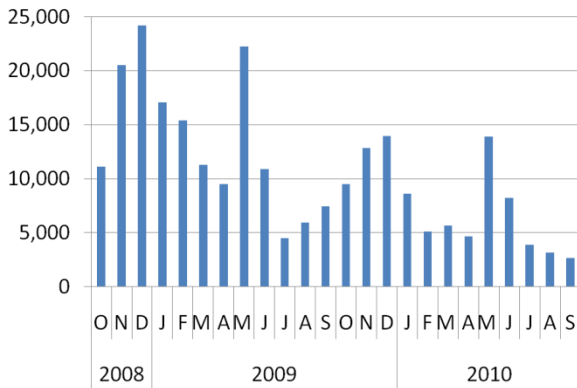
Source: IDES

## Business stats

Mass layoffs in Illinois declined for the fourth consecutive month in September.

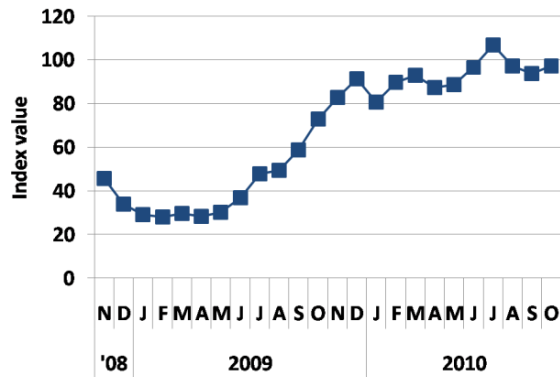
The CBAI has been flat over the last three months, suggesting no change in the level of business activity in the Chicago region in the near future.

**Illinois worker layoffs by companies terminating more than 50 employees at a time**



Source: IDES

**The Chicago Business Activity Index by month**

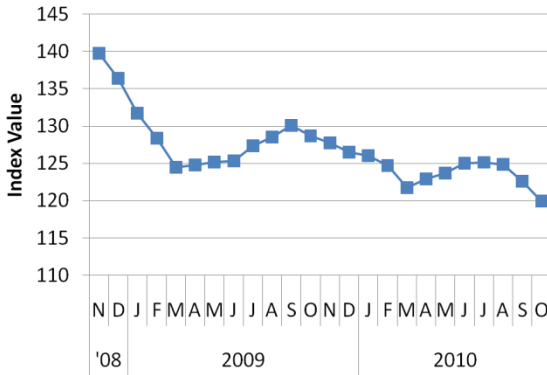


Source: University of Illinois Regional Economic Analysis Laboratory (REAL)

## Business stats

After a brief increase during the first half of 2010, Chicagoland home prices have declined in the last few months.

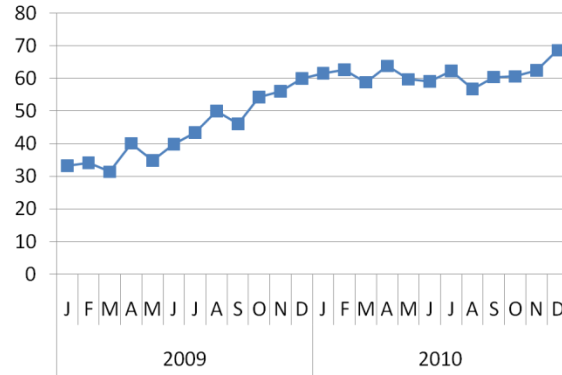
**The Case-Shiller home price index for the Chicago area**  
(1<sup>st</sup> quarter 2000 = 100)



Source: Standard and Poor's Case-Shiller Home Price Index

The monthly survey of Chicago-area purchasing managers shows little change in the expected level of purchasing over the next few months.

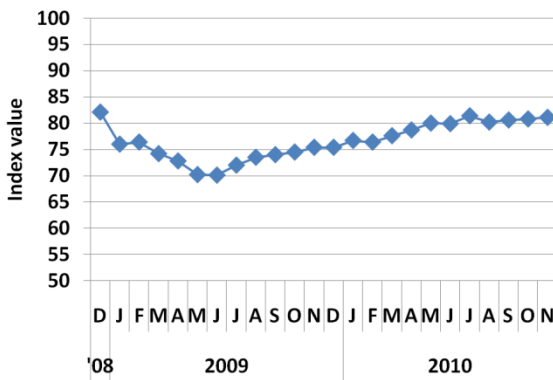
**The Chicago Business Barometer Index**



Source: Institute for Supply Management-Chicago

The Chicago Fed's measure of regional manufacturing activity has been flat over the last few months.

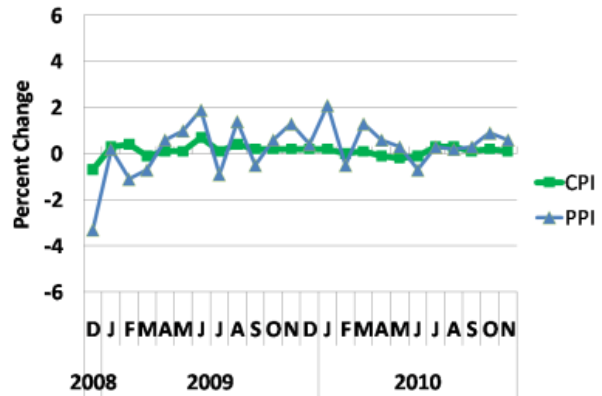
**Midwest Manufacturing Index by month**



Source: Federal Reserve Bank of Chicago

The CPI and the PPI suggest there is almost no inflation at the national level.

**Consumer and Producer Price Indexes by month**



Source: Bureau of Labor Statistics

## Chicago Job Projections

IDES has reduced its projection of jobs substantially since its last projections two years ago. Total jobs declined from 295,000 in the previous 2006 – 2016 projection to 127,000 in the latest projections covering 2008 - 2018.

### PRIOR estimates: 2006 baseline jobs vs. 2016 projected ranked by total job growth

Occupational category	2006 baseline	2016 projected	Ranked by 2006-2016 projected change	% change	Average annual job openings from		
					New jobs	Replace- ment jobs	Total jobs
Administrative support	271,000	307,000	<b>36,000</b>	13%	4,000	6,000	10,000
Education	83,000	112,000	<b>29,000</b>	35%	3,000	2,000	5,000
Health care practitioners	69,000	94,000	<b>25,000</b>	36%	2,000	1,000	4,000
Business operations	101,000	125,000	<b>24,000</b>	24%	2,000	2,000	4,000
Property maintenance	54,000	75,000	<b>21,000</b>	39%	2,000	1,000	3,000
Computer science	38,000	58,000	<b>20,000</b>	52%	2,000	1,000	3,000
Food service	102,000	122,000	<b>19,000</b>	19%	2,000	4,000	6,000
Sales	132,000	148,000	<b>17,000</b>	13%	2,000	4,000	5,000
Transportation	97,000	111,000	<b>15,000</b>	15%	2,000	2,000	4,000
Health care support	30,000	44,000	<b>14,000</b>	45%	1,000	<1,000	2,000
All other categories	437,000	512,000	<b>75,000</b>	17%	8,000	9,000	17,000
<b>Total</b>	<b>1,414,000</b>	<b>1,709,000</b>	<b>295,000</b>	<b>21%</b>	<b>30,000</b>	<b>31,000</b>	<b>62,000</b>

Source: IDES

Note: The sum of columns and rows may not match the totals due to rounding error.

### NEW estimates: 2008 baseline jobs vs. 2018 projected ranked by total job growth

Occupational category	2008 baseline	2018 projected	Ranked by 2008-2018 projected change	% change	Average annual job openings from		
					New jobs	Replace- ment jobs	Total jobs
Business operations	108,000	123,000	<b>15,000</b>	14%	2,000	2,000	4,000
Administrative support	260,000	275,000	<b>14,000</b>	6%	2,000	5,000	7,000
Food service	103,000	117,000	<b>14,000</b>	13%	1,000	4,000	5,000
Health care practitioners	70,000	82,000	<b>11,000</b>	16%	1,000	1,000	3,000
Education	84,000	95,000	<b>11,000</b>	13%	1,000	2,000	3,000
Health care support	32,000	41,000	<b>9,000</b>	29%	1,000	<500	1,000
Personal care service	51,000	58,000	<b>8,000</b>	15%	1,000	1,000	2,000
Sales	125,000	131,000	<b>6,000</b>	5%	1,000	4,000	4,000
Computer science	39,000	44,000	<b>6,000</b>	15%	1,000	1,000	1,000
Transportation	91,000	97,000	<b>5,000</b>	6%	1,000	2,000	3,000
All other categories	444,000	472,000	<b>28,000</b>	6%	3,000	9,000	13,000
<b>Total, All Occupations</b>	<b>1,406,000</b>	<b>1,533,000</b>	<b>127,000</b>	<b>9%</b>	<b>14,000</b>	<b>32,000</b>	<b>46,000</b>

Source: IDES

Note: The sum of columns and rows may not match the totals due to rounding error.

## Definitions, Sources, and Notes

### Job stats

**IDES** develops unemployment rates for metropolitan areas, counties and cities through a complex, multi-step process that includes a variety of data inputs, such as total non-farm employment estimates, unemployment insurance claims, population and employment data from the Census Bureau and employment and unemployment controls used to adjust for groups not covered by the Unemployment Insurance system

- **Unemployed** as measured by IDES are those individuals who had no employment during the reference week, were available for work (except for temporary illness) and had made specific efforts to find employment some time during the 4 week-period ending with the reference week. Persons who were waiting to be recalled to a job from which they had been laid off need not have been looking for work to be classified as unemployed.
- **Total in labor force** Included are all persons in the civilian non-institutional population classified as either employed or unemployed.
- **Total employed** includes those who, during the reference week (the week including the twelfth day of the month), (a) did any work as paid employees, worked in their own business or profession or on their own farm, or worked 15 hours or more as unpaid workers in an enterprise operated by a member of their family, or (b) were not working but who had jobs from which they were temporarily absent. Each employed person is counted only once, even if he or she holds more than one job.
- **Initial unemployment claims** come from the **Illinois Department of Employment Security (IDES)** administrative data. They are requests for determination of insured status (new claim) or notices filed when a break in job attachment has occurred, (additional claim). Insured status refers to qualifying base period wages with an insured employer and the determination of the individual's weekly benefit amount.

The unemployment measures below are estimates derived from the **U.S. Census Bureau's current job change** statistics below come from Local Employment Dynamics (LED), a partnership between the IDES and the U.S. Census Bureau to develop information about local workforce and labor market conditions. This information is built from sources that cover more than 90% of total wage and salary civilian jobs, primarily state and federal administrative records. Exclusions to this coverage include federal government workers, agricultural workers, domestic workers, and the self-employed.

- **New hires** is the number of current employees who were not employed by their current employer in the previous quarter.
- **Job creation** is the number of new jobs created by expansion of existing firms or establishment of new firms within the area.
- **Net job flow** is the total difference in employment at businesses from one period to the next.

**The Current Population Survey (CPS)** as reported by the **U.S. Bureau of Labor Statistics (BLS)**. All figures are seasonally adjusted.

- **Unemployed 15 weeks or more** are persons unemployed 15 weeks or longer, as a percent of the civilian labor force (U-1).
- **Unemployed** is the total unemployed as a percent of the civilian labor force. This is the official unemployment rate (U-3).
- **Unemployed including discouraged workers** includes the regular unemployed plus persons not in the labor force who want and are available for a job and who have looked for work sometime in the past 12 months (or since the end of their last job if they held one within the past 12 months), but who are not currently looking because they believe there are no jobs available or there are none for which they would qualify.
- **Unemployed including marginally attached workers** includes the regular unemployed plus persons who currently are neither working nor looking for work but indicate that they want and are available for a job and have looked for work sometime in the recent past (U-5).
- **Unemployed including marginally attached workers and part time workers (for economic reasons)** includes the regular unemployed plus the marginally attached plus those who want and are available for full-time work but have had to settle for a part-time schedule (U-6).

### American Community Survey

The U.S. Census Bureau's ACS has surveyed about 2.9 million housing unit addresses annually since 2005. The survey asks about a number of areas, including demographics, employment, and living costs. The survey produces estimates at the national, state, and local level, including Public Use Microdata Areas that are subject to sampling error. See <http://www.census.gov/acs/www/>

- The industries employing youth and young adults use codes from the North American Industry Classification System NAIC. The four industries with the greatest number of weighted values were selected, with all others combined into the “Other” group.

### Business stats

- **Mass layoffs** are all layoffs reported to **IDES** in which 50 or more employees were separated for 30 or more days. It excludes government and agriculture.
- The **Chicago Business Activity Index** is produced by the **University of Illinois Regional Economics Application Laboratory**. It measures the business cycle status of the six-county Chicago area. It tends to lead the local business cycle by three-to-four months. For more information, see: <http://www.real.illinois.edu/>
- The **Chicago Business Barometer** is a seasonally adjusted index produced by the **Institute for Supply Management – Chicago**. It is based on a survey of Chicago area purchasing managers who may work for local, national, or multinational companies. The figures from 2010 are from the June 2010 report. The figures from 2009 are from the December 2009 report.
- The **Home Price Index** is the Case-Shiller Home Price Index published by **Standard and Poor’s**. It measures the seasonally adjusted changes residential home values in 20 Metropolitan Statistical Areas.
- The **Midwest Manufacturing Index** is produced by the **Federal Reserve Bank of Chicago**. It is composite measure of hours worked in manufacturing companies in 15 industries in Illinois, Michigan, Wisconsin, Iowa, and Indiana.
- The **Consumer Price Index** measures the average change in prices paid for a market basket of goods and services by urban consumers as calculated by BLS.
- The **Producer Price Index** measures the average change over time in the selling prices received by domestic producers for their commodities produced as calculated by BLS.

### Job Projections

- **Chicago job projections** are calculated by **IDES** over a two year and ten year period at the state, county, metropolitan statistical area, economic development region, local workforce area and community college district. The projections use Standard Occupational Classification and North American Industry Classification System as defined by the U.S. Bureau of Labor Statistics.

---

*This report was prepared by the CWICstats team from Chapin Hall at the University of Chicago.*

Financial support for Chapin Hall’s CWICstats Chicago workforce research and data initiative has been provided by the Chicago Workforce Investment Council, The Chicago Community Trust, the Searle Funds at The Chicago Community Trust, The Boeing Company, the Ford Foundation, The Joyce Foundation, The Annie E. Casey Foundation, the Lloyd A. Fry Foundation, and the Steans Family Foundation.

---

The Chicago Workforce Investment Council (CWIC) is a non-profit organization created in 2009 to ensure that Chicago has a skilled and educated workforce to keep our businesses, economy, communities, and families healthy and productive. CWIC monitors over \$300 million of public investment in education and workforce training, and coordinates resources to ensure these investments support the overall health of our economy.



CHICAGO WORKFORCE  
INVESTMENT COUNCIL

For more information contact CWIC at:  
60 West Randolph, Suite 200  
Chicago, IL 60601  
Tel 312-553-443