


# GOVERNING

*for Children*  
AND Families


A Social Policy Web Conference Series

## Collaborations to Promote Early Childhood Education and Childcare

September 9, 2008  
1 pm ET / 12 pm CT / 11 am MT / 10 am PT




**CHAPIN HALL**  
CENTER FOR CHILDREN  
AT THE UNIVERSITY OF CHICAGO




NGA Center for  
BEST PRACTICES


## Speakers




**Patrick Boyle**  
*Youth Today*



**Sarah Daily**  
NGA Center for Best  
Practices



**Harriet Dichter**  
Office of Child  
Development and Early  
Learning, Pennsylvania  
Departments of Public  
Welfare and Education



**Robert Goerge**  
Chapin Hall Center for  
Children at the University  
of Chicago

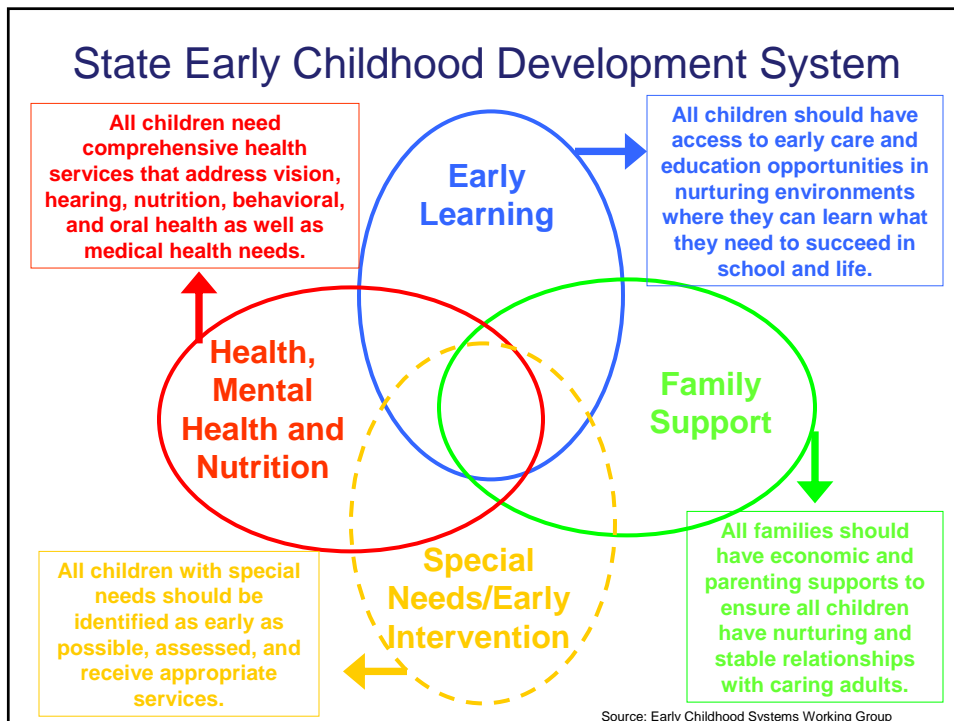
**For detailed speaker information, please refer to the handout with panelist bios.**



## Collaborations to Promote Early Childhood Education and Childcare



**Sarah Daily**  
Senior Policy Analyst  
Education Division  
National Governors Association  
Center for Best Practices  
sdaily@nga.org



### ...coordination is no easy task

Health, Mental Health, and Nutrition	Early Learning
Community Mental Health Services Block Grant Child Abuse Prevention and Treatment Act (CAPTA) Community Health Centers Title V Maternal and Child Health (MCH) Block Grant Medicaid, State Child Health Insurance Program (SCHIP) Women, Infants and Children (WIC)	Child Care Development Fund (CCDF) Head Start and Early Head Start Even Start State Funded Preschool Individuals with Disabilities Act (IDEA): Part C Infants and Toddlers with Disabilities, and Part B Preschool Education
Special Needs, Early Intervention	Family Support
Individuals with Disabilities Act (IDEA): Part C Infants and Toddlers with Disabilities, and Part B Preschool Education	Even Start Medicaid, State Child Health Insurance Program (SCHIP) Social Services Block Grant (SSBG) Temporary Assistance for Needy Families (TANF) Foundations for Learning Grants Community Health Centers

Sources: [http://www.nccp.org/publications/pdf/text\\_655.pdf](http://www.nccp.org/publications/pdf/text_655.pdf) and [http://www.finebynine.org/uploaded/file/SECPTAN\\_Build\\_PROOF.pdf](http://www.finebynine.org/uploaded/file/SECPTAN_Build_PROOF.pdf)

### Early Childhood Governance Models

<b>Department</b>	Massachusetts Department of Early Education and Care Georgia's Bright from the Start, Department of Early Care and Learning Washington State Department of Early Learning
<b>Cabinet</b>	Ohio Early Childhood Cabinet Kansas Children's Cabinet and Trust Fund New Mexico Children's Cabinet Connecticut Early Childhood Cabinet
<b>Office</b>	Pennsylvania Office of Child Development and Early Learning (OCDEL) Virginia Office of Early Childhood Development
<b>Division</b>	Maryland Division of Early Childhood Development



Sarah Daily



## Head Start for School Readiness Act of 2007

The Governor shall designate or establish a council to serve as the State Advisory Council on Early Childhood Education and Care for children from birth to school entry to:

- Conduct periodic statewide needs assessments;
- Identify barriers and opportunities to collaboration;
- Increase participation in early childhood programs;
- Develop a unified early childhood data system;
- Develop an early childhood professional development system;
- Assess the effectiveness of higher education programs; and
- Improve statewide early learning guidelines.



Sarah Daily



## State Early Childhood Advisory Councils

- Connecticut Early Childhood Cabinet
- Illinois Early Learning Council
- Maine Children's Growth Council
- Mississippi Early Childhood Advisory Council
- Pennsylvania's OCDEL Advisory Committee



Sarah Daily



## NGA Resources

NGA Center for Best Practices

[www.nga.org/center](http://www.nga.org/center)

NGA Early Childhood Projects

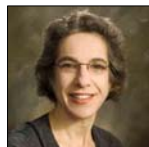
[www.nga.org/center/earlychild](http://www.nga.org/center/earlychild)



Sarah Daily



## *Strategy for Success: Pennsylvania's Investment in an Early Learning System*



**Harriet Dichter**

Deputy Secretary  
Office of Child Development & Early Learning  
Departments of Education and Public Welfare  
hdichter@state.pa.us

## Pennsylvania Serves More Children in Quality Programs

- 2002-03: 18 percent
- 2007-08: 26 percent



Harriet Dichter

## Children Served Over Time

Program	FY 02-03	FY 08-09 <sup>1</sup>
<b>ABG Class Size Reduction (K-3rd Grade)</b>	Did not exist	18,887 <sup>2</sup>
<b>Child Care Works</b>		
TANF	33,939	29,020
Former TANF	20,000	38,713
Low Income	45,908	60,114
<b>TOTAL (monthly average)</b>	<b>99,847</b>	<b>127,847</b>
<b>Early Intervention</b>		
Birth to 3 Program	22,020	32,689
3 to 5 Program	33,726	44,976
<b>Full Day Kindergarten</b>		
ABG Full Day Kindergarten	Did not exist	56,939 <sup>2</sup>
ABG Full Day Kindergarten Supplement	Did not exist	6,377 <sup>2</sup>
<b>All Full Day Kindergarten <sup>3</sup></b>	<b>42,015</b>	<b>77,505 <sup>2</sup></b>

Program	FY 02-03	FY 08-09 <sup>1</sup>
<b>Head Start</b>		
Federal Head Start	30,986	35,372 <sup>2</sup>
Head Start Supplemental Assistance Program	Did not exist	5,610
<b>Keystone STARS</b>	<b>45,745</b>	<b>170,936</b>
<b>Nurse Family Partnership</b>	<b>3,092</b>	<b>4,287</b>
<b>Pre-K</b>		
School Based Pre-K and K4 <sup>4</sup>	2,684	10,456 <sup>2</sup>
ABG Pre-K	Did not exist	4,155 <sup>2</sup>
PA Pre-K Counts	Did not exist	12,000



Harriet Dichter

<sup>1</sup> Fiscal Year End Goal or Projection

<sup>2</sup> FY 08-09 is based on 07-08 Participating

<sup>3</sup> Total children in school-based full day K from ABG, ABG Supplement and other funding sources

<sup>4</sup> Total children in Pre-K minus ABG Pre-K

### *Significant New Public Investment*

- Created three new public funding streams
  - PA Pre-K Counts (\$86 million)
  - Head Start Supplemental (\$40 million)
  - Accountability Block Grant (\$275 million)
- Moved Keystone STARS from pilot to ongoing program (\$7 million to nearly \$70 million)
- Significant growth in all programmatic areas of the Office of Child Development & Early Learning



Harriet Dichter

### *New Nationally Innovative Governance Structure*

- Office of Child Development & Early Learning is part of both the Education and Public Welfare Departments
- Promotes a system of quality early learning with opportunities for children from birth through kindergarten
- Leverages and coordinates financial and program resources from each agency to assure efficient use of funds and to promote consistent quality



Harriet Dichter

## *OCDEL Organization*

### **Certification Services:**

- Licensing and Inspection of child care centers & homes

### **Child Care Subsidy Services:**

- Child Care Works
- Parent Counseling and Referral Services

### **Early Intervention Services:**

- Infant/Toddler Early Intervention
- Preschool Early Intervention
- Early Intervention Technical Assistance

### **Early Learning Services:**

- Pennsylvania Pre-K Counts
- Keystone STARS
- PA Early Learning Keys to Quality
- Full Day Kindergarten
- Head Start State Supplemental
- Family Support Programs



Harriet Dichter

## *Building an Early Education Continuum*

- Our goal is a seamless system of quality early education from birth through age five.
- PA one of only 8 states to advance investments in the full continuum of early childhood education programs (NCSL-child care; pre-k; family support; infrastructure)
- A focus on:
  - Quality program design
  - Quality implementation and coordination
  - Meeting the diverse needs of families
  - Maximizing resources
  - Documenting positive impact and building accountability into the programs



Harriet Dichter

## *Framework for Systems Building*



Harriet Dichter

## *New Focus on Accountability and Documenting Results*

- Created common quality standards for the early childhood programs along with vigorous monitoring and oversight
- *Risk and Reach Study* risk ranks every county and highlights progress and gaps, showing the interaction between children at risk, reach of publicly supported programs, and depth of public investment
- Creating child assessment and outcome system to assure impact from public investment (Early Learning Network)



Harriet Dichter

## *Commitment to Public - Private Partnerships*

- Partnerships with foundations allow for experimentation and have led to new public initiatives such as PA Pre-K Counts, Early Childhood Mental Health Consultation, and continued development of needed infrastructure
- Partnerships with communities through Community Engagement Initiative are helping to educate and engage broader constituency for early childhood
- Partnerships with business and civic leaders are deepening understanding, commitment, and action



Harriet Dichter



CHAPIN HALL  
CENTER FOR CHILDREN  
AT THE UNIVERSITY OF CHICAGO

## Early Childhood Programs in Chicago: Eligibility and Use



**Robert Goerge**  
Research Fellow

## Outline

- Overall eligibility and use
- Collaborative funding between Head Start and Child Care Development Fund
- Data used
- Data processing challenges



Robert Goerge



## Early Childhood Programs in Chicago: Eligibility and Participation of Children Aged 3-4

	No. of Children	% of Children Aged 3-4	
<b>Population 3-4 years</b>	87,737	100.0	
<b>Program Use:</b>			
<b>Combined Head Start and Subsidized Child Care</b>			% of Eligible Children
Children eligible	47,120	53.7	
Maximum no. of participants *	29,307	33.4	62.2
Minimum no. of participants	22,891	26.1	48.6
<b>Chicago Public Schools:</b>			
Total enrollment	13,985	15.9	
State pre-K programs	12,321	14.0	
Child Parent Centers	1,292	1.5	
Kindergarten (4-year olds)	372	0.4	
<b>Combined Use:</b>			
Head Start, Child Care, CPS			
Maximum	43,292	49.3	
Minimum	36,876	42.0	

\* some duplication of individuals is likely in the combined counts



Robert Goerge



### Early Childhood Programs in Chicago: Eligibility and Participation of 3- and 4-Year-Old Children

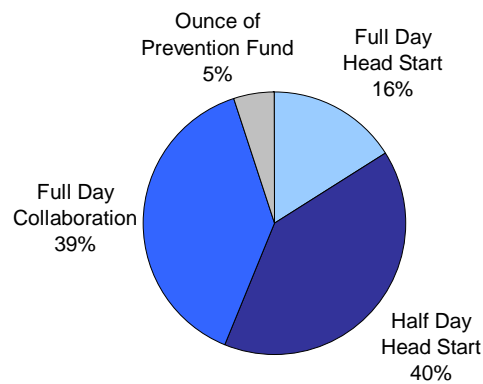
	No. of Children	% of Children Aged 3-4	% of Eligible Children
<b>Population Aged 3-4</b>	87,737	100.0	
<b>Program Eligibility</b>			
Head Start only	11,203	12.8	
Child care subsidy only	15,046	17.1	
Both HS and CC	20,871	23.8	
<b>Total</b>	<b>47,120</b>	<b>53.7</b>	
<b>Program Use</b>			
<b>Head Start</b>			
HS eligible	32,074	36.6	
HS enrollment	17,320	19.7	54.0
<b>Child Care Subsidy</b>			
CC Subsidy eligible	35,917	40.9	
CC Subsidy use	11,987	13.7	33.4



Robert Goerge



### Percent of 3-5 year olds in Head Start



Robert Goerge



## Data Used

- Population estimates
- Administrative data
  - Chicago Department of Children and Youth Services early childhood programs
  - Illinois Department of Human Services Child Care Tracking System
  - Chicago Public Schools Enrollment data
  - Ounce of Prevention Fund programs



Robert Goerge



## Data Sources

- 1990 and 2000 Census
- U.S. Census Bureau, Cook County pop. estimates, 1990-2005
- U.S. Census Bureau, ages 5-17 poverty estimates, 1995-2003
- Chicago Public Schools enrollment data
- Illinois Workforce Information Center, Cook Co. unemployment data, 1990-2006
- Aggregate food stamp enrollment, 1990-2004



Robert Goerge



## Data Processing

- Combine all the data sources and unduplicate to the extent possible
- Challenges
  - Get the ages and time frames right (age in September)
  - Be certain of when children are participating in different programs (some children drop in and out)



Robert Goerge



## For More Information

- Early Childhood Programs Supply and Demand  
[dcys-ccsd.chapinhall.org](http://dcys-ccsd.chapinhall.org)
- Chicago Children and Youth 1990-2010:  
Changing Population Trends and Their  
Implications for Services  
[www.chapinhall.org](http://www.chapinhall.org)



Robert Goerge



## Question and Answer Session



**Patrick Boyle**  
*Youth Today*



**Sarah Daily**  
NGA Center for Best  
Practices



**Harriet Dichter**  
Office of Child  
Development and Early  
Learning, Pennsylvania  
Departments of Public  
Welfare and Education



**Robert Goerge**  
Chapin Hall Center for  
Children at the University  
of Chicago

**Please use the Q&A window to type in your questions.  
Your name will appear automatically; please include your affiliation and location.**

# GOVERNING *for Children* AND Families

A Social Policy Web Conference Series

You will be notified by e-mail when the recording of today's web conference is available.

Subscribe to the Chapin Hall Alert for updates on new publications and web conferences at [www.chapinhall.org](http://www.chapinhall.org).

If you have questions about the web conference, contact Jelene Britten at [jbritten@chapinhall.org](mailto:jbritten@chapinhall.org).

